



Guide

E-trading: new structure, more functions

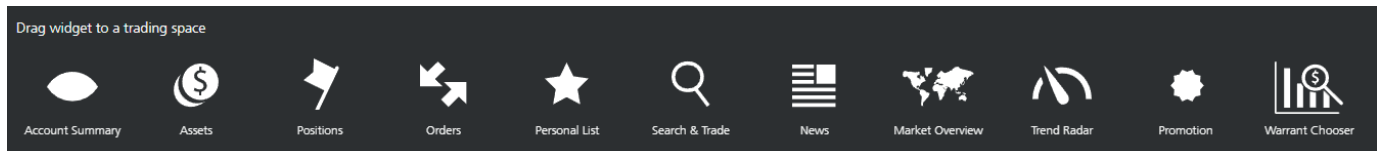
Contents

Introduction	3
Overview of widgets in the old trading area	3
1. Overview of assets	3
2. Assets	4
3. Positions	5
4. Orders	6
5. Personal list	6
6. Search & Trade	7
7. News	7
8. Market overview	8
9. Trend radar	8
10. Promotion	9
11. Warrant chooser	10
12. Other new functions	11

Introduction

E-trading has been modernized, and the functions in the “Trading space” menu item have been moved to other parts of the platform. All the functions you previously used are still available. You will find them in new locations within e-trading, enhanced with additional options. This guide provides a clear overview of where you can now find and use the tools and functions you need. Existing settings will be applied automatically.

Overview of widgets in the old “Trading space” menu item



1. Account Summary

Overview

Buying power **399.52** CHF | Daily change **364.53** CHF + 1.90% | Total value **19'939.13** CHF

Absolute performance **+ 108.45** CHF

- Buying power →
- Performance →
- Total value →
- Allocations →
- ESG →

Cash

Open orders

Total buying power

2. Assets



Portfolio

Watchlists

Tools

Markets

Inspiration

ESG

ESG

Overview

Buying power **399.53** CHF

Daily change **361.65** CHF + 1.88%

Absolute performance + 113.35 CHF

- Buying power
- Performance
- Total value
- Allocations
- ESG

Assets

	Currency	Rate
Buy Sell	CHF	1.0000
Buy Sell	EUR	0.9200
Buy Sell	USD	0.7805

3. Positions



Portfolio

Watchlists

Tools

Markets

Inspiration

ESG

Offers

Overview

Buying power **362.08** CHF

Daily change **334.74** CHF + 1.74%

Absolute performance **+ 95.27** CHF

Total

- Buying power
- Performance
- Total value
- Allocations
- ESG

Assets

Orders

Saving plans

Positions

Product	Quantity	Unit cost	Total value
^ CHF			

4. Orders



Overview

Buying power **362.08** CHF | Daily change **340.83** CHF + 1.78% | Total value 1

Absolute performance + 96.44 CHF

- Buying power →
- Performance →
- Total value →
- Allocations →
- ESG →

Assets

Orders

	Product	B/S	Quantity	Amount	Market	
		SHARE	BUY	1	—	SIX Sv

5. Personal list



All personal lists from the trading area will automatically be transferred to the Watchlists area. There is no need for you to do anything.

Watchlists

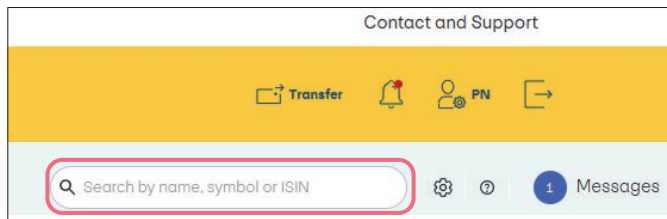
- Schweizer Monatssieger
10:24 | Modified
- US-Monatssieger
10:24 | Modified
- ESG-Favoriten
10:24 | Modified

Schweizer Monatssieger

Last modified 10:24 • 23 products

	Symbol	Estimated	Last	Chg %	Bid	Ask	Currency	Volume
	BANB		72.95	▲ 4.51%	72.75	72.95	CHF	23'185
	BEAN		739.50	▲ 2.07%	739.00	740.50	CHF	1'946

6. Search & Trade



7. Promotion



Markets

Regions

- Global overview
- Switzerland >
- US >
- Germany >
- Euronext >
- Canada >
- Austria >
- Italy >
- UK >
- Scandinavia >

News

Daily overview

SMI • SWISS MARKET INDEX SMI® PRICE 13'248.15 ⚡ ▲ 0.78% All components	DAX • DAX (PERF) 24'044.37 🕒 All components
PX1 • CAC 40 8'310.72 🕒 ▲ 0.91% All components	SX5E • 5'976.44 🕒 All components
EUR/CHF 0.91994 ⚡ ▼ -0.20%	USD/CHF 0.78032 ⚡

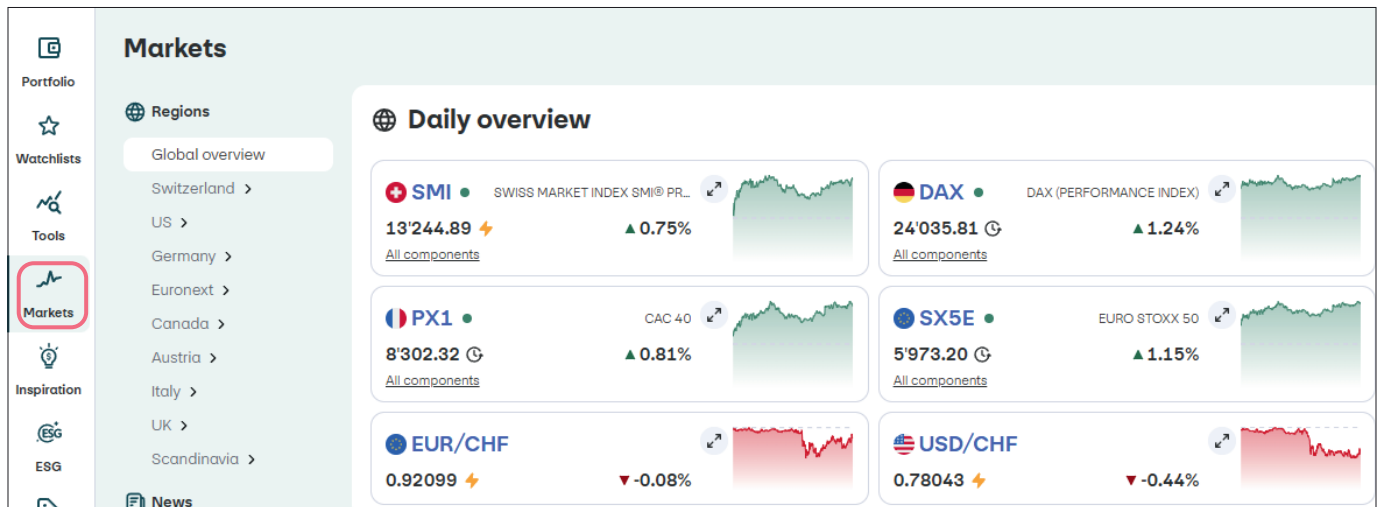
News

World news feed All DE FR

31 mins ago
Givaudan wächst unter Zielbandbreite - aber besser als befürchtet
GIVN +6.37% GIV161 +0.10% GIV20 — GIV21 0.00%

1 hours ago
Lindt gewinnt gegen Aldi: Verbot für rote Schokoladenkugeln
LSCN +0.83% LSCB +0.95% LSC17 — LSC20 —

8. Market overview



9. Trend radar



Trend Radar

Explore the stocks that have seen the most significant improvements in analyst ratings over the past two weeks ⓘ

Trade	Symbol	Name	Last	CCY	Exchange	Sector	Rating
Trade	☆ FG	F&G ANNUITIES AND LIFE ORD	25.395	USD	New York Stock Exchang...	Finance	8
Trade	☆ VIV	VIVENDI ORD	2.11	EUR	Euronext Paris	Consumer Services	7
Trade	☆ MARR	MARR ORD	8.30	EUR	Euronext Borsa Italiana	Distribution Services	8
Trade	☆ CPB	THE CAMPBELL S COMPANY ORD	20.15	USD	NASDAQ New York	Consumer Non-Durables	7
Trade	☆ MILDEF	MILDEF GROUP ORD	131.85	SEK	Nasdaq Stockholm	Electronic Technology	9
Trade	☆ IBN	ICICI BANK ADR REP 2 ORD	28.20	USD	New York Stock Exchang...	Finance	7
Trade	☆ SK	SEB ORD	48.12	EUR	Euronext Paris	Consumer Durables	8
Trade	☆ DLTH	DULUTH HOLDINGS CL B ORD	3.15	USD	NASDAQ New York	Retail Trade	8

10. Promotion



Promotions

swisscanto 40%

Purchases of Swisscanto ETFs from 1'000.-

Benefit from sponsored products: Selected ETFs of Swisscanto on SIX Swiss Exchange are tradable until May 31, 2026 (or until revoked) with a 40% discount on brokerage fees from 1'000.- order volume. This promotion is valid for purchases only.

[Discover →](#)

Invesco 50%

Purchases of Invesco ETFs from 1'000.-

Benefit from sponsored products: ETFs of Invesco on SIX Swiss Exchange are tradable until December 31, 2026 (or until revoked) with a 50% discount on brokerage fees from 1'000.- order volume. This promotion is valid for purchases only.

Portfolio

Watchlists

Tools

Markets

Inspiration

ESG

Offers

11. Warrant Chooser



Portfolio

Watchlists

Tools

Markets

TOOLS

Scanner

TradingView

ALERTS

Price alerts

Scanner

New Scanner ✎ × (+)

Filters

Default

Product type: Structured products

Underlying: Symbol, name, ISIN

Multi underlyings: All Single Multi

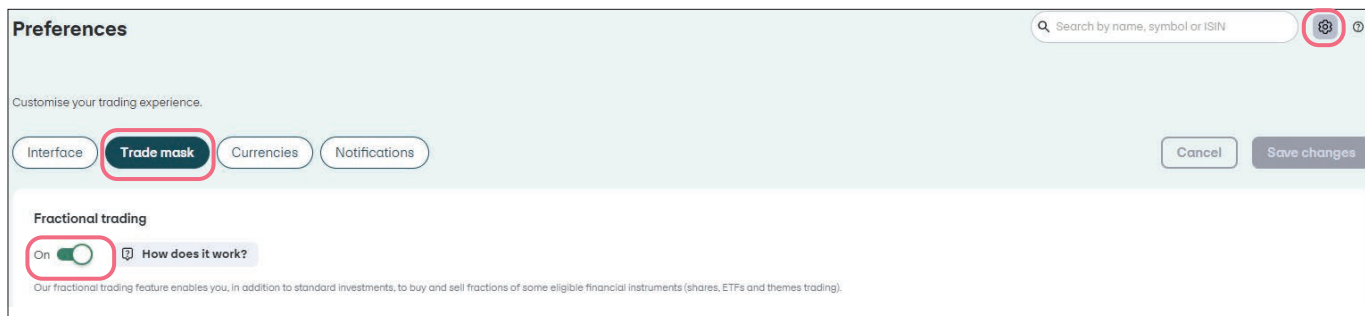
Product category: 2100 - Warrants

Some filters will be disabled if set to "Multi"

12. Other new functions

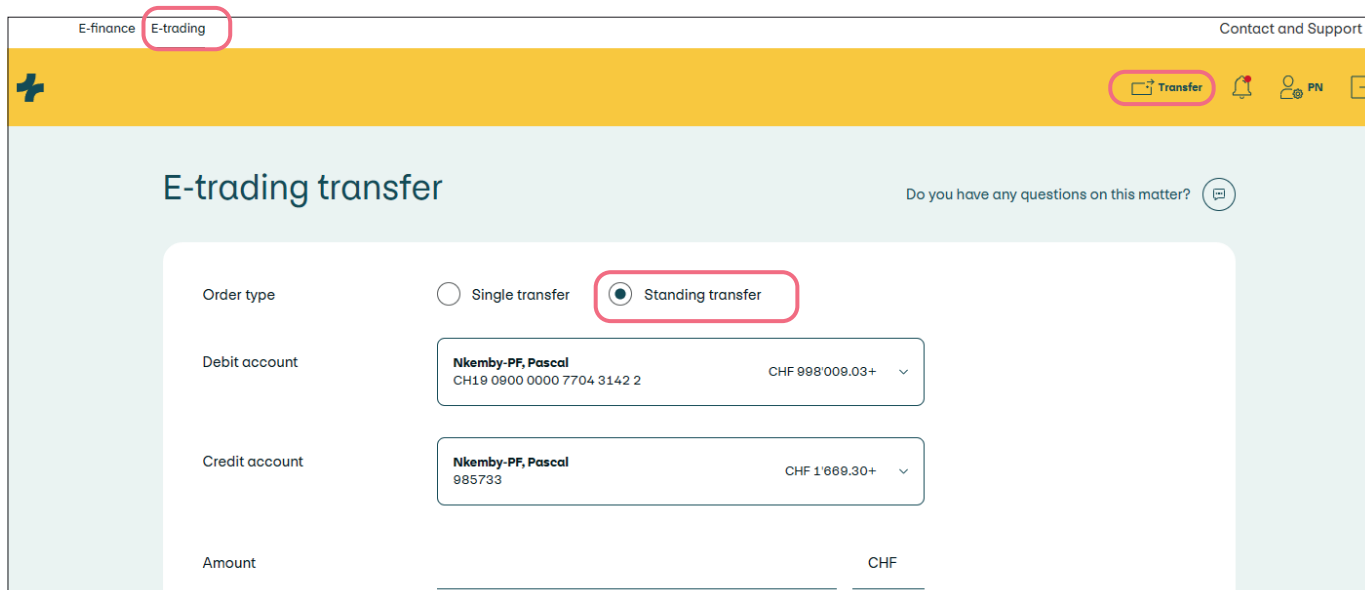
Fractional trading

Fractional trading allows you to buy and sell fractions of shares, ETFs or tracker certificates in addition to the usual full shares. This is particularly useful if you're looking to invest small or specific amounts. This option can be activated directly in e-trading, in the "Trade mask" menu under "Settings".



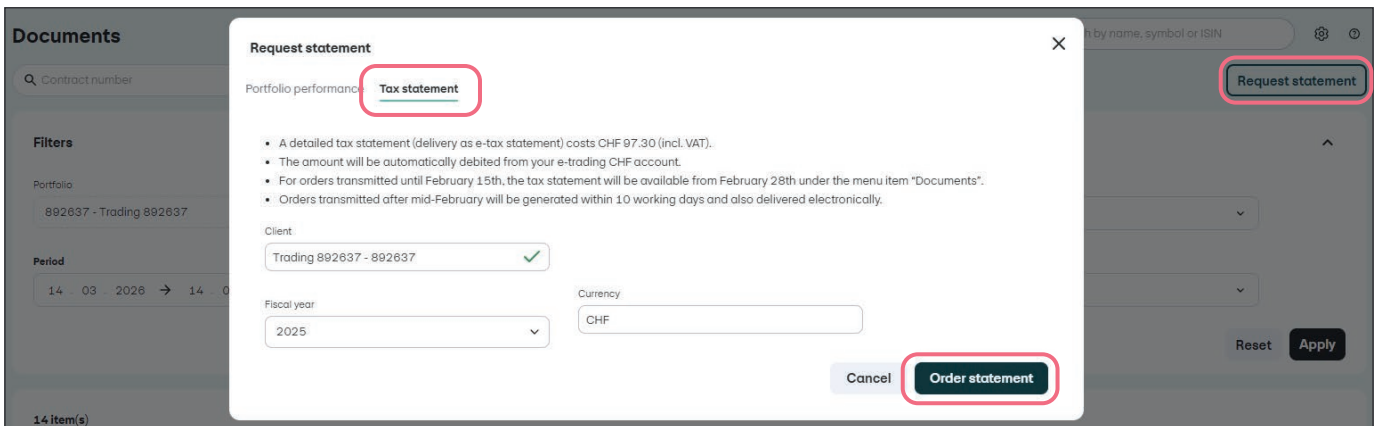
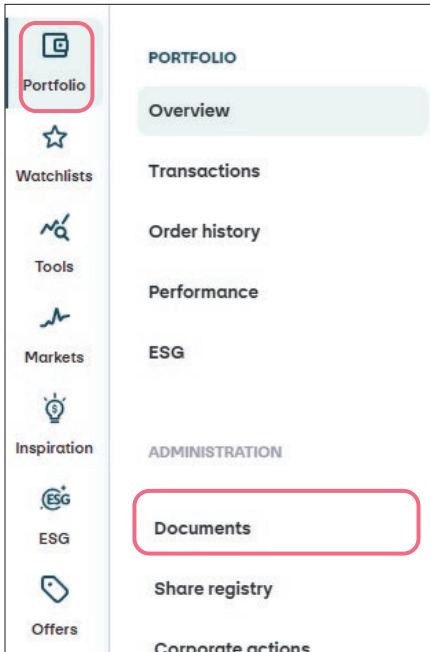
Standing transfer order in e-trading

With e-trading standing transfer orders, you can automate transfers between your accounts to ensure that your e-trading account always has sufficient funds (e.g. for saving plans). You can enter, edit or delete a standing transfer order directly in e-finance or e-trading.



Order a tax statement

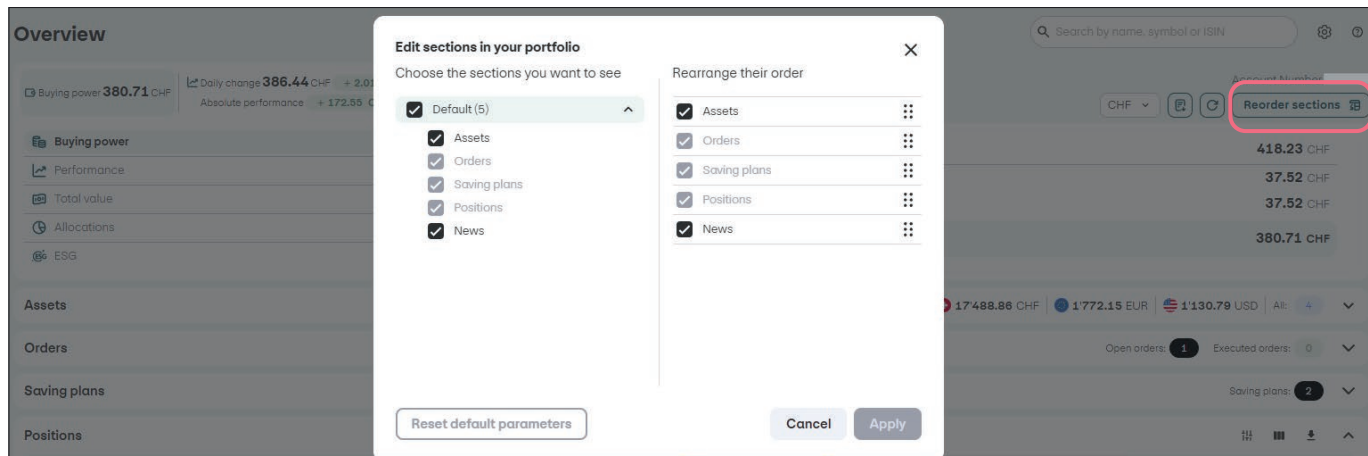
You can now order your e-tax statement directly in e-trading. To do so, go to the “Documents” section and click on the “Request statement” button in the top right. A pop-up window will open. Select “Tax statement” and order the e-tax statement for the year you require.



Customize the overview page

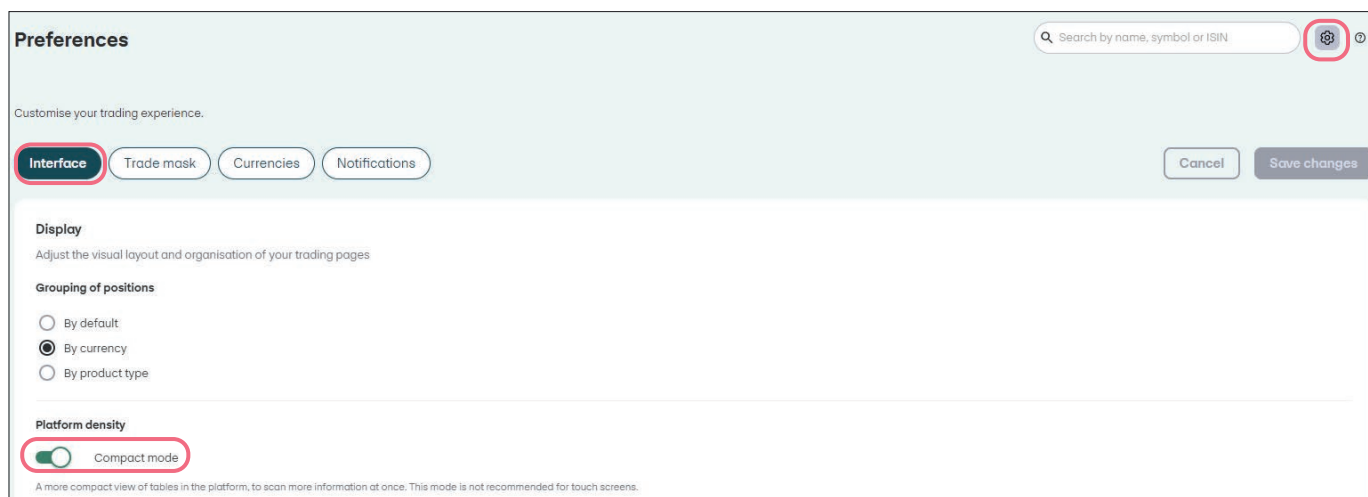
In the “Portfolio” view, you can add, remove and rearrange widgets to tailor the page to your needs. Simply click on the button labelled “Reorder sections”. A pop-up window will appear.

You can then select the widgets you want to see or remove widgets from your selection. Drag and drop the elements to your preferred place using the little dots.



Compact mode

Compact mode displays 30% more rows in all tables compared to normal mode. This gives you a more comprehensive overview of your portfolio and allows you to see more information at once. You can activate compact mode via the toggle button at the bottom of the screen or go to “Settings” > “Interface” > “Platform density”.



If you have any questions, please contact us on +41 58 448 78 00 (Mon–Fri, 8 a.m. to 6 p.m.).